

# Skywire 4G LTE CAT 4 NA

NimbeLink, a global leader in embedded cellular modem technology and asset tracking solutions, has introduced the Skywire<sup>®</sup> 4G LTE CAT 4 NA modem. This Skywire modem leverages Category 4 technology. The NL-SW-LTE-TC4NAG is ideal for delivering fast reliable cellular connectivity to products with applications in North America. The modem supports GNSS, dual SIMs, a single SKU for both AT&T / Verizon networks, integrated TCP/IP stacks, plus is AT&T's FirstNet (Band 14) capable.

The NL-SW-LTE-TC4NAG is pin compatible, designed to replace the NimbeLink CAT 3 modems, NL-SW-LTE-TNAG-X & NL-SW-LTE-TSVG-X, with a higher performance and lower cost product.

## Features

- Small Skywire Form-Factor
- 4G LTE Category 4 with 3G fallback
- U.FL Antenna ports for easy antenna integration
- Band 14 support – FirstNet on AT&T's network
- Dual SIM support with integrated solder down SIM and external 3FF SIM card slot
- GNSS support for GPS, Glonass, Beidou, Galileo, and QZSS
- Multi-Carrier Support on a Single Device

## Advantages

- Longest Network Life
- CAT 4 LTE Speeds (Up to 150 MB down/50 MB up)
- Easily connect to Verizon or AT&T networks.
- Improved reception with RX diversity
- 8 Band LTE support
- Integrated GNSS support

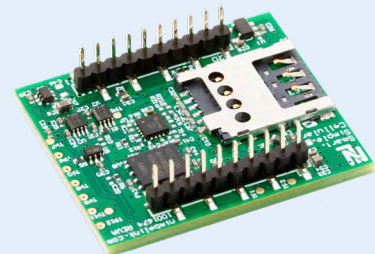


Part Number	Description
-------------	-------------

NL-SW-LTE-TC4NAG	Skywire LTE CAT 4, North America, GNSS
------------------	--

## About The Skywire Family

Skywire cellular modems are designed to make cellular integration as fast and as easy as it can be. Exceptionally small, pin-compatible, and end-device certified, Skywire modems enable developers to quickly and reliably connect IoT products to cellular networks around the world. Skywire modems are backed by industry leading documentation and expert-level product support.



## Technical Specifications (NL-SW-LTE-TC4NAG)

<b>Target Region</b>	
	North America
Compatible Carriers	AT&T, Bell, Rogers, Telus, Verizon
<b>Cellular Technology</b>	
LTE Category	LTE CAT 4
LTE Frequency Bands	FDD B2[1900], B4[1700], B5[850], B12[700], B13[700], B14[700], B66[1700], B71[600]
3G Technology Supported	DC-HSPA+
3G Frequency Band	B2[1900], B4[1700], B5[850]
2G Technology Supported	N/A
2G Frequency Band	N/A
<b>Data Speeds</b>	
Download Rate and Upload Rate	Download: LTE: 150 Mbps   HSPA+: 42.0 Mbps Upload: LTE: 50 Mbps   HSPA+: 5.76 Mbps
<b>Hardware</b>	
Form Factor	Skywire Interface
Dimensions	29mm x 33mm x 10.5mm
Weight	8 grams
<b>Internet Protocols</b>	
Network Stack Support	Integrated TCP/IP, UDP/IP, HTTP, FTP, SSL/TLS, SMTP, IPv4/IPv6, NITZ, PING, PPP Stacks
SMS	SMS over IMS
<b>Location</b>	
GNSS	GPS, Glonass, Beidou, Galileo, and QZSS
<b>Power</b>	
Supply Voltage	1.65V - 5.5V
I/O Voltage	1.65V - 5.5V
Current Consumption	Average N/A   Peak N/A   Idle N/A   Sleep N/A
<b>Interfaces</b>	
Data Interface	UART, USB (USB 2.0 compliant)
USB Driver Support	OS: Windows 7   Windows 8   Windows 10   Linux Drivers: MBIM   PPP   RNDIS   ECM   QMI   NMEA   AT Console
RF	Primary (U.FL), Rx Diversity and MIMO DL 2x2 (U.FL)
<b>SIM</b>	
Type	Integrated Verizon SIM, external 3FF slot
<b>Approvals</b>	
Regulatory Certifications	FCC, IC, PTCRB
Carrier Approvals	AT&T, Rogers (In-Progress), Telus (In-Progress), Verizon
Compliance	RoHS compliant
<b>Temperature Range</b>	
Industrial Grade	-40°C to +85°C
<b>Support and Warranty</b>	
	1 Year standard warranty

### About NimbeLink

NimbeLink is the world's most trusted partner for cellular solutions for the Industrial Internet of Things (IIoT). The Skywire® series of cellular embedded modems, enable dramatic reduction in development and time-to-market. NimbeLink also develops and markets complete, highly configurable edge-to-enterprise Asset-Tracking Solutions.

For more information, visit [NimbeLink.com](http://NimbeLink.com)

Content © 2019 NimbeLink Corp. All Right Reserved.